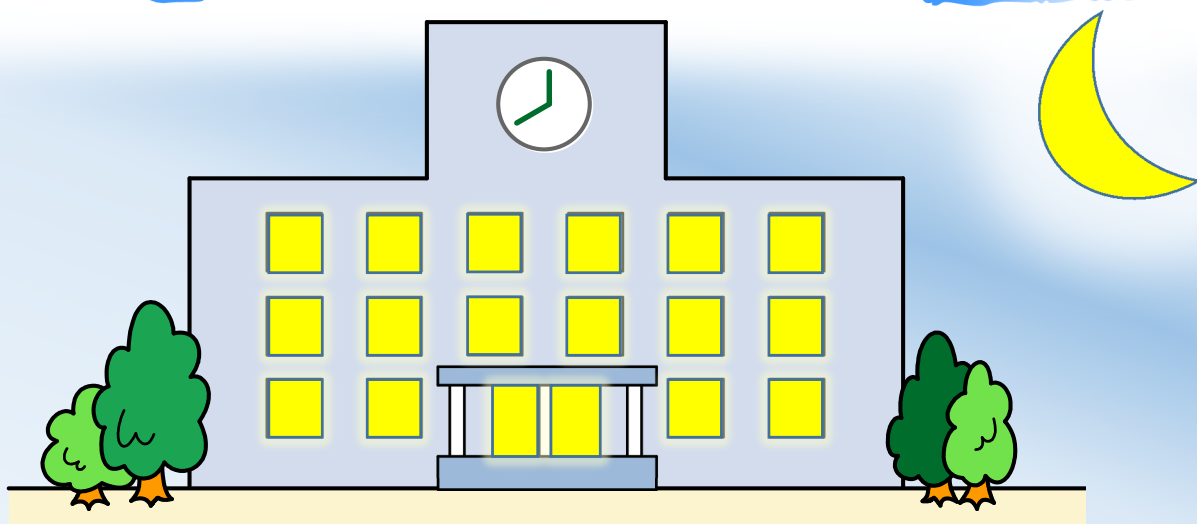


Jōshiritsu Mitsukaidō Chūgakkō Briefing session to enter Evening Classes



January 27 (Wed) 19:00 ~
At Mitsukaidō Chūgakkō

Night junior high school means evening classes of public junior high school

「Those who failed to complete compulsory education during the postwar turmoil」

「Foreigners who live in Japan without completing compulsory education in their home country」

「Those who graduated from junior high school but could not learn enough for reasons such as school refusal」

It is a school where people who can not learn in junior high school for various reasons can learn at night from now.

In Joso City, People who meets the following conditions can enter the evening class

Over 16 years old , and . . .

①Those who couldn't graduate from junior high school

or②Those who have already graduated, but want to try learning again

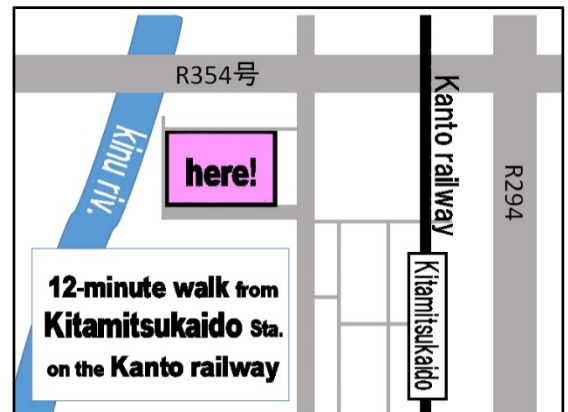
or③Foreigner with status of residence

1 Where is the school

Mistukaido junior high school

Zip 303-0006 61, Koyamado-machi , Joso-shi

Phone number : 0 2 9 7 - 2 3 - 1 2 5 0



2 How is the school schedule

There are classes every day from 5:30 to around 9:00 for 5 days a week

life of a year

First trimester 4/6~7/20

(Summer vacation 7/21~8/31)

Second trimester 9/1~12/24

(Winter vacation 12/25~1/7)

Third trimester 1/8~3/24

(spring vacation 3/25~3/31)

【daily lesson】

Attending school 5:25 pm

(meeting 5:25pm~5:30)

Period 1 5:30pm~6:10

Period 2 6:15pm~6:55

(BreakTime 6:55pm~7:15)

Period 3 7:15pm~7:55

Period 4 8:00pm~8:40

(Cleaning 8:40pm~8:45)

Leave school 8:50pm

There is no school meal. Please prepare for yourself and eat at break time.

3 How do we study

We will make different levels of course and teach from where you can understand.
The course is by skill of Japanese and academic background.

	1	2	3	4
Mon	Japanese BeginnerA1	Japanese BeginnerA1	Japanese BeginnerA1	
	Japanese BeginnerA2	Japanese BeginnerA2	Japanese BeginnerA2	Math review
	Japanese Basic	social studies	English	Math Basic
	Japanese	English Basic	social studies	Math
Tue	Japanese BeginnerA1	Japanese BeginnerA1	Japanese BeginnerA1	Music
	Japanese BeginnerA2	Japanese BeginnerA2	Japanese BeginnerA2	
	social studies	Japanese Basic		
	English Basic	Japanese	science	
Wed	Japanese BeginnerA1		Art, Technical course	Art, Technical course
	Japanese BeginnerA2	Math review		
		Math Basic		
	science	Math		
Thu		Japanese BeginnerA1	Japanese BeginnerA1	
	Math review	Japanese BeginnerA2	Japanese BeginnerA2	
	Math Basic	Japanese Basic	English	P.E.
	Math	Japanese	P.E.	English Basic
Fri		Japanese BeginnerA1	Japanese BeginnerA1	Homeroom
	Math review	Japanese BeginnerA2	Japanese BeginnerA2	
	Math Basic	English	Japanese Basic	
	Math	social studies	Japanese	

4 how much does it cost

Tuition is free because it is a public school.

We collect 5,000 yen at the time of admission and purchase necessary teaching materials from among them. In addition, we may collect money for school events.

5 Flow to admission

Due date of Application(Gansho) : ~February 27, 2021
Please submit on the day of the interview

① Please participate in the school briefing session

- today
- Venue: Mistukaido junior high school

② Interview

- Venue : Mitsukaido-chugakko
- Date : It appoint from the mitsukaido-chugakko

Please write
「Application」
(Gansho)
Bring your 「Residence card」
at this day

※ Please submit the「Application」 (Gansho)
at the time of interview
(For foreigners, please Bring your 「Residence card」)

The result of the interview will be announced by phone in February

③ Please submit the required documents (due date : 3/26)

**Please submit
these documents**

① Required documents

1. **Residence certificate** (The address of the applicant is listed)
· · · Get it at the city hall where you live
2. **Result of medical checkup** (Containing the results of the roentgen)
· · · Please have a medical examination at a nearby hospital
【height, weight, blood pressure, urine test, Chest x-ray】
3. (Person who lives outside Joso city) **Admission permit (Hukushinsho)**

② Submission destination : Joso-shi Kyouiku-iinkai

③ How to Submit

Please submit at the information session held at the school on March 26th.



If there are any false statements in the documents or interviews, or if you do something inappropriate for students, we may cancel your enrollment or drop you out even after admission.

6 Other

- (1) If it is difficult to go to school by public transportation, you can go to school with your own car. If you wish, please apply in advance.
- (2) Two weeks after admission (four weeks for graduates) is a temporary admission period. If the state of attendance and learning during that time is good, it will be officially accepted.
- (3) If you have any concerns about admission, please contact below.

Contact Information

0297-23-1250

Mitsukaido junior high school

(Mon.-Fri. 12:30-21:00)

[memo]